

2009 ESRI International User Conference

Supporting The Lone GIS Professional

July 14, 2009

David A. Howes

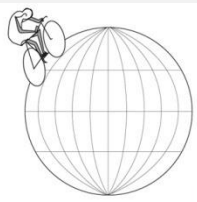
lonegispro@gmail.com



Agenda

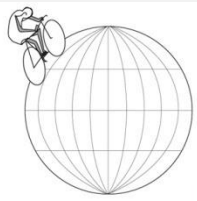
- **Initiative overview**
 - Lone GIS Pro characteristics
 - Goals
 - Activities
 - Observations and considerations
 - Recent conference experience
- **Discussion**

How many of you are already members?



The Lone GIS Professional

Here We Are



The Lone GIS Professional

Would We Like To Be Here?



The Lone GIS Professional

Initiative Overview

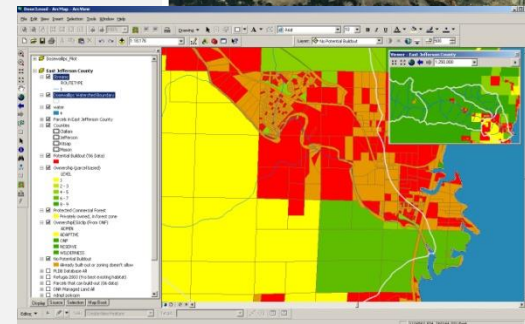
- **Established March 2008**
- **Initial goals:**
 - Consider the plight of the lone GIS professional
 - If their professional experience can be improved, try to help them to be more successful
- **A like-minded user community independent of technology and industry focus**
- **Current membership count: 97**
- **Enthusiasm amongst members high**
- **Strong potential for growth**



The Lone GIS Professional

Lone GIS Pro Characteristics

- **Full-time GIS professional**
- **Part-time GIS professional with other responsibilities**
- **Professional in another field using GIS to manage, analyze & present data**
- **Significant portion of GIS community**
- **Diverse knowledge, innovative & creative work products**
- **Many globes to juggle**
- **Increasing expectations, skill requirements**



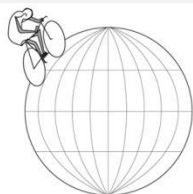
The Lone GIS Professional

Lone GIS Pro Characteristics

- Some are happy to be working on their own, some not so happy
- Unrealistic expectations are common
- Lack of knowledge, confidence
- Need for peer review
- Tendency to feel overwhelmed
- Insufficient recognition



Images from:
<http://keoughp.wordpress.com/2007/07>
<http://www.tmi-band.com/images/tmi%20logo.jpg>



The Lone GIS Professional

Initiative Goals

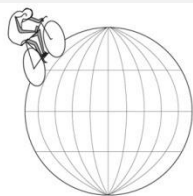
- **Help each other be more successful**
- **Foster interaction & collaboration (web resources, local events, direct contact)**
- **Emphasize multi-disciplinary thinking (someone in another discipline may know just what you need)**
- **Develop customized training materials**
- **Filter information**
- **Share knowledge & experience (positive & negative)**
- **Serve as mentors**



The Lone GIS Professional

Initiative Goals (2)

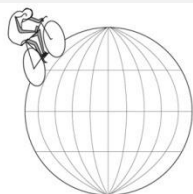
- **Provide collective feedback for vendors & organizations, such as ESRI, WA URISA Help focus activities**
- **Lobby for access to resources (e.g., remote access to conferences)**
- **Collaborate with & complement other organizations (e.g., CUGOS)**
- **Promote participation in professional organizations**
- **Encourage giving of instructional presentations**



The Lone GIS Professional

Presentations This Week

- **Versatile Map Production: The Value of .NET and ArcObjects – *David Howes***
 - Cartography and Map Production/Database-Driven Cartography
 - Wednesday 8-30 am-9:45 am
 - Room 23 B
- **The Stemilt-Squilchuck Community Vision - *Matt Stevenson***
 - Ecology and Conservation/GIS for Landscape Planning and Inventory
 - Wednesday 10:15 am-11:30 am
 - Room 32 B



The Lone GIS Professional

http://groups.google.com/lonegispro

Lone GIS Professional | Google Groups - Mozilla Firefox

File Edit View History Bookmarks Tools Help

Google groups

lonegispro@gmail.com | My Groups | Favorites | Profile | Help | My Account | Sign out

Lone GIS Professional

Home

[edit welcome message]

Pages All 2 pages view all » + add page

Member Information
Last updated by David Howes (Lone GIS Pro Coordinator) - Jun 6 2008 - 1 author - 1 page long

Welcome to the Lone GIS Professional Initiative
Last updated by David Howes (Lone GIS Pro Coordinator) - Jun 2 2008 - 1 author - 1 page long

Discussions 7 of 745 messages view all » + new post

Using Session Variables in VB.net 2008 for gridview control
By csergent - Jul 10 - 1 author - 0 replies

[LoneGISPro Group:775] Re: Freelance Billing Rates
By je...@jsagiservices.com - Jul 9 - 9 authors - 32 replies

[LoneGISPro Group:773] Re: [LoneGISPro Group:1] Re: Freelance Billing Rates
By je...@jsagiservices.com - Jul 9 - 1 author - 1 reply

NW UG Meeting Announcement
By Kessler GIS - Jul 2 - 1 author - 0 replies

[LoneGISPro Group:745] Kessler GIS Invites You To A Social at the Users Conference in San Diego
By David Howes - Jul 2 - 2 authors - 1 reply

Kitsap and Olympic Peninsula GIS
By Starla DeLorey - Jun 30 - 1 author - 0 replies

Fall Lone GIS Pro event in Leavenworth, WA
By David Howes - Jun 30 - 10 authors - 26 replies

Files 1 of 23 files view all » + upload file

automaptools.zip
Last updated by karsten - May 13

Members 97 members view all » + invite members

Home

Pages

Discussions

Files

Members

About this group

Edit my membership

Group settings

Management tasks

Invite members

Group info

Members: 96

Activity: Low activity

Language: English

Group categories: Not categorized

add a category

More group info »

The Lone GIS Professional

http://groups.google.com/lonegispro

Discussions - Lone GIS Professional | Google Groups - Mozilla Firefox

File Edit View History Bookmarks Tools Help

Google groups

lonegispro@gmail.com | My Groups | Favorites | Profile | Help | My Account | Sign out

Lone GIS Professional

Search this group Search Groups

Discussions

View: [Topic list](#), [Topic summary](#)
Sort by: [Latest message](#), [First message](#)

Topics 1 - 30 of 175 [Older >](#)

Topic	Rating	Messages	Author	Date
Using Session Variables in VB.net 2008 for gridview control		1	csergent (1 author)	Jul 10
Freelance Billing Rates		33	je...@jsagiservices.com (9 authors)	Jul 9
[LoneGISPro Group:] Re: Freelance Billing Rates		2	je...@jsagiservices.com (1 author)	Jul 9
NW UG Meeting Announcement		1	Kessler GIS (1 author)	Jul 2
Kessler GIS Invites You To A Social at the Users Conference in San Diego		2	David Howes (2 authors)	Jul 2
Kitsap and Olympic Peninsula GIS		1	Starla DeLorey (1 author)	Jun 30
Fall Lone GIS Pro event in Leavenworth, WA		27	David Howes (10 authors)	Jun 30
Network Analyst question		2	Starla DeLorey (2 authors)	Jun 30
Query Polygon on Feature Layer that Contains a Point in Another Feature Layer		4	csergent (2 authors)	Jun 24
[RE][LoneGISPro Group:718] Re: many-to-one relationships		2	Andrew Parker (2 authors)	Jun 23
FW: [LoneGISPro Group:719] automation of kriging		2	Bret (2 authors)	Jun 19
automation of kriging		2	David Puckett (2 authors)	Jun 18
many-to-one relationships		3	Andrew Parker (3 authors)	Jun 18
[LoneGISPro Group:713] 2009 ESRI International User Conference, Lone GIS Professional Special Interest Group Meeting		1	Janet Brewster (1 author)	Jun 18
2009 ESRI User Conference--Who is attending/presenting?		3	at...@co.douglas.wa.us (3 authors)	Jun 17
2009 ESRI International User Conference, Lone GIS Professional Special Interest Group Meeting		1	David A. Howes (Lone GIS Pro Coordinator) (1 author)	Jun 17
[LoneGISPro Group:706] Tracking data/map requests		1	Janet Brewster (1 author)	Jun 15
Help for a non-programmer		2	Andrew Parker (2 authors)	Jun 15
Tracking data/map requests		2	at...@co.douglas.wa.us (2 authors)	Jun 15
Seattle Area Pub Night for June		23	David Howes (13 authors)	Jun 12

Done

Home Pages

Discussions

[+ new post](#)

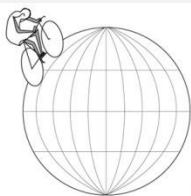
Files

Members

[About this group](#)
[Edit my membership](#)
[Group settings](#)
[Management tasks](#)
[Invite members](#)

Group info

Members: 96
Activity: Low activity
Language: English
Group categories: Not categorized
[add a category](#)
[More group info >>](#)



The Lone GIS Professional

Events

- **2008**

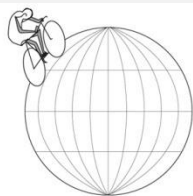
- Washington GIS Conference Session (~70 attendees)
- ESRI International User Conference Special Interest Group (SIG) Meeting (~45 attendees)

- **2009**

- ESRI Developer Summit SIG Meeting (~45 attendees)
- Washington GIS Conference Session (~50 attendees)
- ESRI International User Conference SIG Meeting – July 14, 2009

- **Local gatherings**

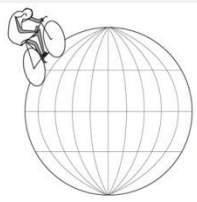
- Four so far in Seattle area



The Lone GIS Professional

Observations & Considerations

- **Let group take its natural course**
- **Community is valuable**
- **Trust is critical**
- **Level of participation high**
 - To what extent should we insist on contributions?
- **Group posts often well thought out (strong effort)**
- **Diverse type of member – alternative perspectives useful**
- **New membership protocol**
 - Invitations by existing members
 - Recruitment at meetings



The Lone GIS Professional

Observations & Considerations (2)

- **How do we encourage greater participation?**
- **How do you know whether someone read your post?**
- **How important is it that you know some basic background information about other members?**
 - Does anyone look at user profiles?
 - Have you completed yours?



The Lone GIS Professional

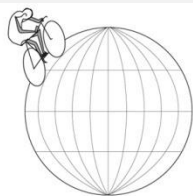
Washington GIS Conference Experience

- **Presentations**

- A Lone GIS Pro Profile – *Gretchen Peterson, PetersonGIS*
- Lone GIS Collaboration – *Matt Stevenson, COREGIS*
- Reflections on Collaborative Experience – *Gretchen Peterson & Matt Stevenson*
- Resource availability/mentorship options – *Eric Edlund, Stillwater Sciences*

- **Modes of communication**

- Professional:
 - What is needed? When? What format?
 - How best to work with him/her/them?
- Technical:
 - MXTs, data, fonts, styles, ArcGIS 9.3.1 layer packages



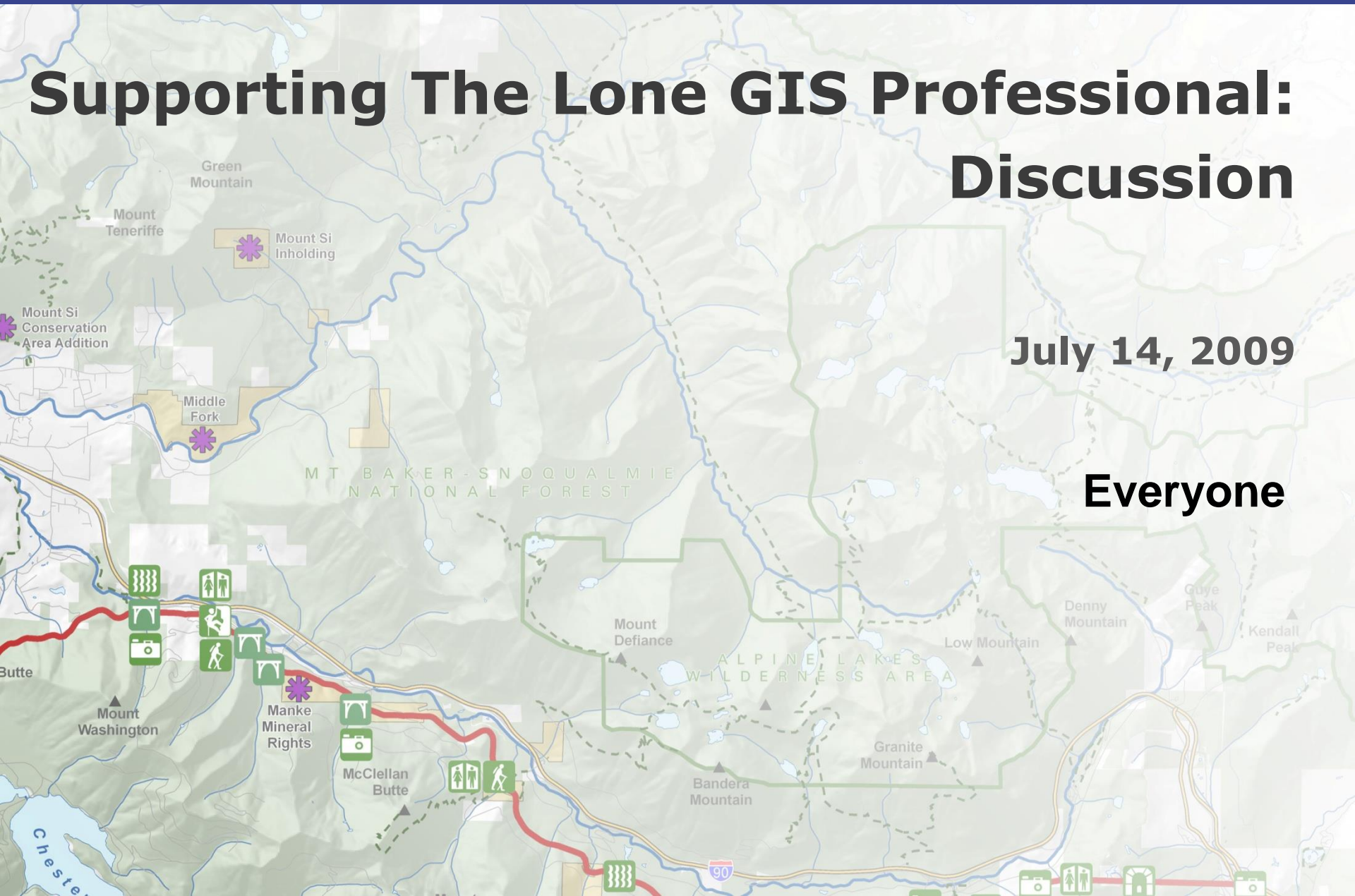
The Lone GIS Professional

2009 ESRI International User Conference

Supporting The Lone GIS Professional: Discussion

July 14, 2009

Everyone



2009 ESRI International User Conference

Supporting The Lone GIS Professional: Discussion

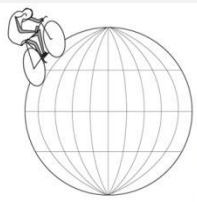
July 14, 2009

Everyone



Discussion Topics

- **What would you like to see in a Lone GIS Pro website?**
- **What events would you like to see/contribute to?**
- **Anything else? How would you like to help?**

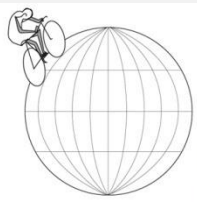


The Lone GIS Professional

DISCUSSION: Website Ideas

What would you like to see in a website?

- **Wiki forum**
- **Interested in becoming a lone GIS pro – how to make the move**
- **How to get out**
- **How to grow your way out – increase your business**
- **What to do if you don't have the technical resources**
- **Comments from Matt – technology, business requirements, what's a minimal setup – type of work matters**
- **Background info – Matt = urban planner**

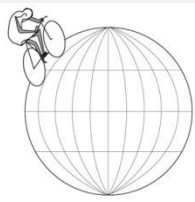


The Lone GIS Professional

DISCUSSION: Website Ideas (2)

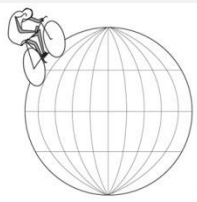
What would you like to see in a website?

- **Helps to have a few years transition**
- **Sources of liability insurance**
- **A forum – source of communication, share ideas**
- **Help find work**
- **Help get professional support**
- **Newsfeed – way of filtering info**
 - E.g., GIS vs surveying world
- **Social interaction sites**
 - Facebook – great for social/friends
 - Could restrict membership
 - 1/2 people have Facebook – not really appropriate for our group



The Lone GIS Professional

- **Facebook cont. – doesn't look good in the office**
- **Makeup of group**
 - Private sector – $\frac{1}{4}$ of audience
 - Public sector – $\frac{1}{4}$ of audience
 - $\frac{1}{2}$?
 - User profile will really help – identify people and contact directly
 - Identify demographics/recruit to complement
- **Resource page – other GIS options, esp. OS**
- **Post capabilities – looking for work**
- **Isolated GIS users – may be in a big organization**



The Lone GIS Professional

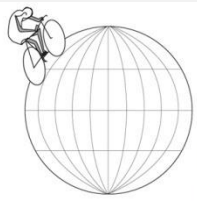
- **How do you get the next job? No time when crunching data, may have a finder's fee?**
- **Joint marketing effort**
- **Need to be strong, must produce, plan ahead**
- **Training materials – eg. In big organization, on own**
- **How fast can we scale up?**
- **Availability**



The Lone GIS Professional

DISCUSSION: Event Ideas

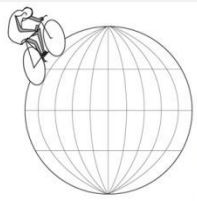
What would you like to see/contribute to?



The Lone GIS Professional

DISCUSSION: Event Ideas (2)

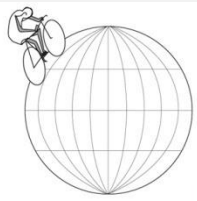
What would you like to see/contribute to?



The Lone GIS Professional

DISCUSSION: Comments/Contribution

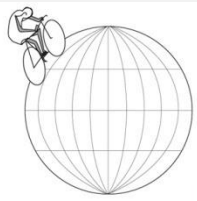
Anything else? How would you like to help?



The Lone GIS Professional

DISCUSSION: Comments/Contribution (2)

Anything else? How would you like to help?



The Lone GIS Professional

Closing Remarks

- **Conclusions**

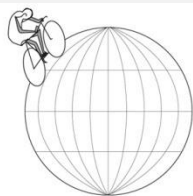
- The Lone GIS Professional Initiative appears to be of increasing value to many GIS professionals
- Potential for growth strong through your contributions

- **Acknowledgments**

- All our members
- Everyone who's supported us, especially at ESRI (Jim Barry, Jim Henderson, Marty Balikov, Heather Glock, Susan Reynolds)

- **Upcoming events**

- Seattle and Eastern Washington gatherings
- 2010 Washington GIS Conference
- 2010 ESRI International User Conference SIG Meeting



The Lone GIS Professional

Please Join & Contribute



The ***Lone GIS Professional***
Initiative

Helping lone GIS Professionals be successful

<http://groups.google.com/group/lonegispro>

For details and to sign up, please contact David Howes
at lonegispro@gmail.com

See cards & sign-up sheets



The Lone GIS Professional